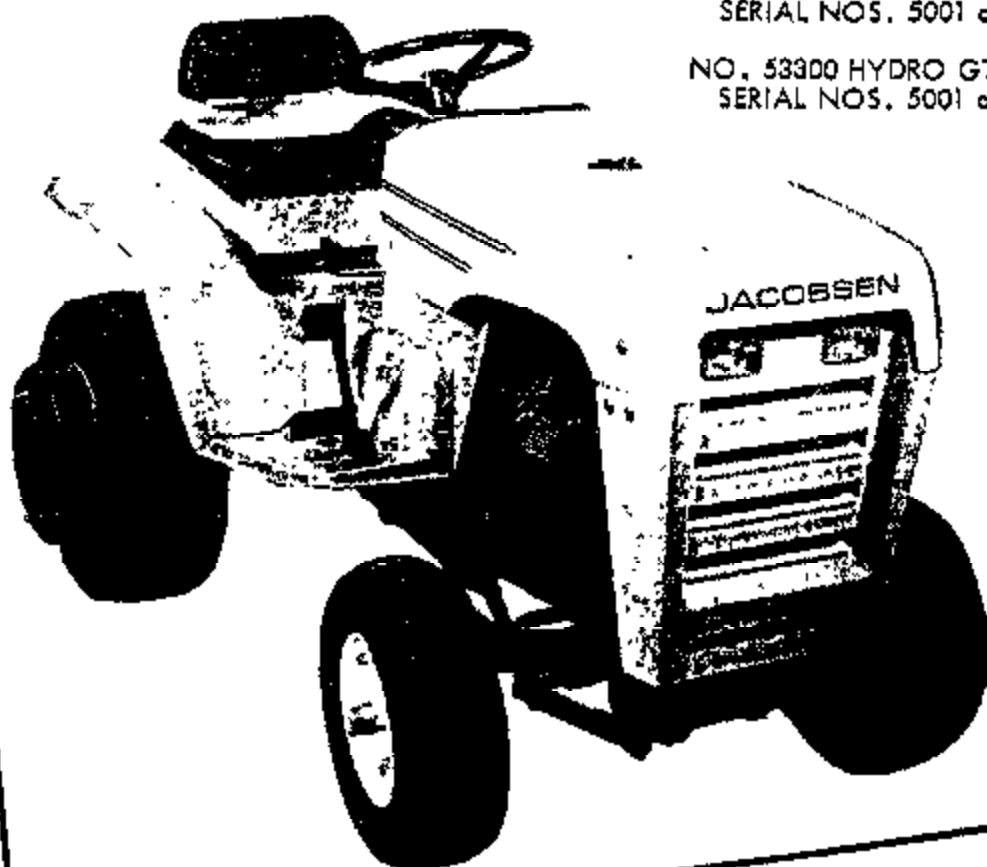


# PARTS LIST

## for **JACOBSEN®** GT SERIES TRACTORS

NO. 53275 HYDRO GT 12  
SERIAL NOS. 5001 and Up

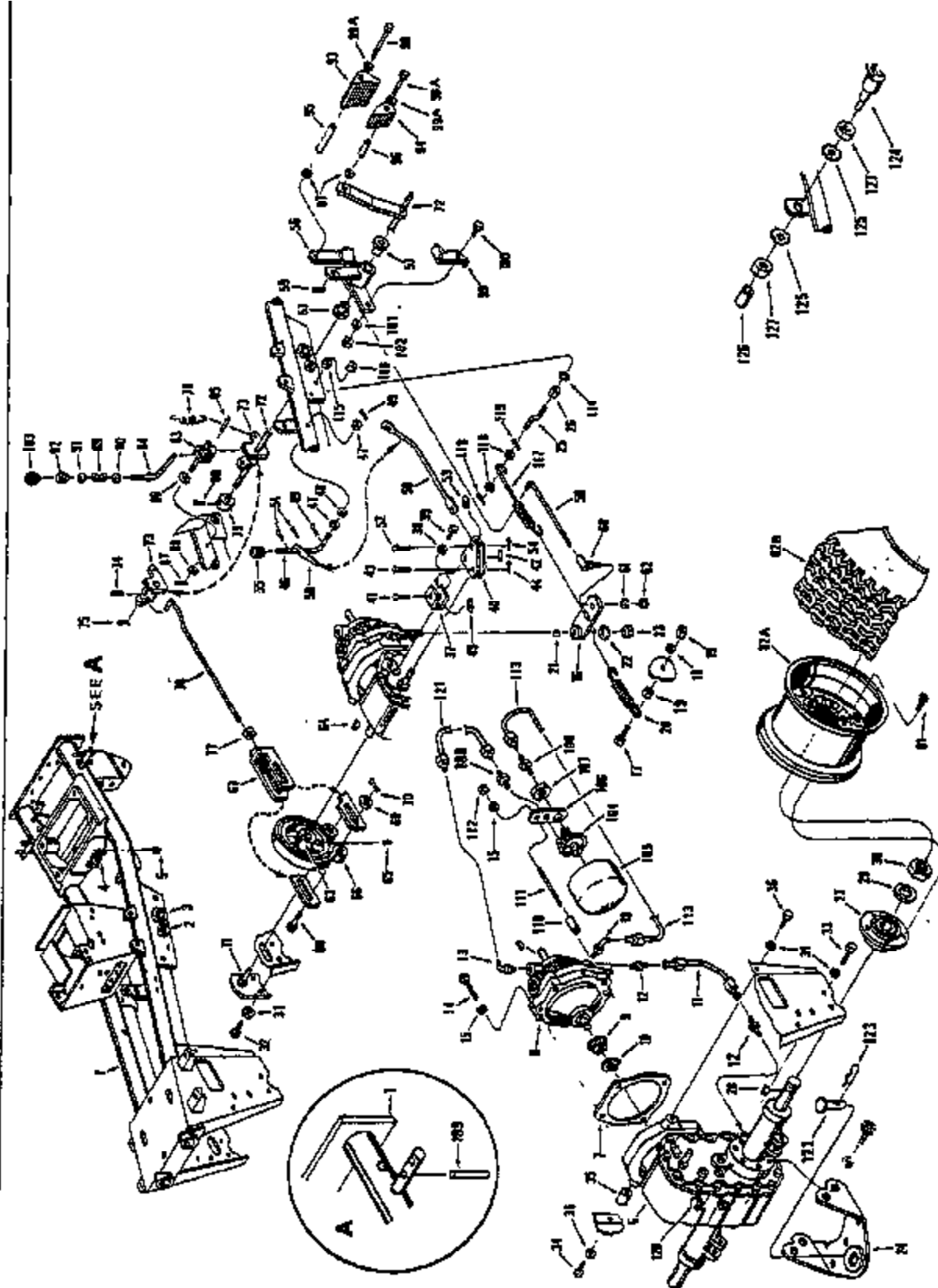
NO. 53300 HYDRO GT 14  
SERIAL NOS. 5001 and Up



**JACOBSEN MANUFACTURING COMPANY**  
*A Member Company of Allegheny Ludlum Industries*  
**RACINE, WISCONSIN 53403**

PART NO. 35211C

ILLUSTRATION 1 - FRAME, TRANSAXLE, HYDRO GEAR & REAR END ASSEMBLY



## PARTS LIST - ILLUSTRATION 1 - FRAME, TRANSAKE, HYDRO GEAR &amp; REAR END ASSEMBLY

Ref. No.	Part No.	Quan.	Description	Ref. No.	Part No.	Quan.	Description
1	118255	1	Frame Assembly	45	454012	1	Washer, Shakeproof, Shift Lever to Frame Mounting
2	346133	2	Bushing, Brake Shaft Pivot	49	450026	2	Pin, 1/8 x 3/4 Cotter Shift Lever to Frame Mounting
3	351308	2	Bushing, Lift Shaft Pivot	50	335226	1	Rod, Shift Actuator
4	351756	2	Bushing, Axle Pivot	51	450026	2	Pin, 1/8 x 3/4 Cotter, Shift Rod to Lever Mounting
5	472206	1	Plug, Engine Oil Drain	52	352142	1	Pin, Actuator Rod to Bell Crank Mounting
6	118258	1	Transaxle Assembly	53	454026	1	Washer, Shakeproof, Activator Rod to Bell Crank Mtg
7	350945	1	Gasket, Hydrogear	54	450014	1	Pin, 3/32 x 3/4 Cotter, Activator Rod to Bell Crank Mounting
8	118261	1	Hydrogear Assembly	55	351837	1	Knob, Shift Lever
9	335165	1	Bevel Pinion	56	158938	1	Speed Control Assembly
10	458009	1	Ring, Retaining	57	348133	2	Bushing
11	350945	1	Tube, Hydrogear to Transaxle	58	335272	1	Rod, Speed Control
12	350947	2	Male Connector, 37° Flare	59	450026	1	Pin, 1/8 x 1 Cotter, Control Rod to Arm, Front
13	351107	2	Male Elbow	60	310089	1	Ball Joint, Control Rod to Arm, Rear
14	400286	3	Screw, 3/8-16 x 2-3/4 Hex Hd Cap Hydrogear to Transaxle Mtg	61	445142	1	Lockwasher, 3/8 Hvy, Ball Joint to Arm Mounting
15	448142	4	Lockwasher, 3/8 Hvy Hydrogear to Transaxle Mtg	62	443112	1	Nut, 3/8-24 Hex, Ball Joint to Arm Mounting
16	158902	1	Hydro Actuator Arm Assembly	63	218089	1	Drum, Brake
17	400180	1	Screw, 5/16-18 x 1-1/4 Hex Hd Hydro Control Spring Mtg	64	423017	1	Key, 3/16 x 3/4 Woodruff, Drum Mtg
18	448136	1	Lockwasher, 5/16 Hvy, Hydro Control Spring Mounting	65	415519	1	Screw, 5/16-18 x 3/8 Soc Hd Set, Drum Mounting
19	443806	2	Nut, 5/16-18 Hex, Hydro Control Spring Mounting	66	129783	1	Brake Band & Lining Assembly
20	350558	1	Spring, Hydro Control Neutralizer	67	169248	1	Brake Pin & Slide Assembly
21	453005	1	Key, 1/8 x 5/8 Woodruff, Actuating Arm Assem to Hydrogear Mtg	68	451459	1	Pin, 1/2 x 1-1/2 Clevis Lining Assem to Bracket Mtg
22	453017	1	Washer, 1/2 SAE Flat, Actuating Arm Assem to Hydrogear Mtg	69	327924	1	Washer, Lining Assembly to Bracket Mounting
23	444758	1	Nut, 1/2-13 Hex, Actuating Arm Assembly Hydrogear Mtg	70	450026	1	Pin, 1/8 x 1 Cotter, Lining Assem to Bracket Mounting
24	129897	1	Draw Bar Assembly	71	159100	1	Brake Mounting Assembly
25	352590	1	Stud, Cranked Hydro Control Spring Mounting	72	129583	1	Brake Arm Assembly
26	444762	1	Nut, 3/8-16 Hex C/Lock Stud Mtg	73	158932	1	Brake Lock Sector Assembly
27	218080	2	Hub, Rear Wheel	74	451397	1	Pin, 1/4 x 1-1/4 Roll
28	453038	2	Key, 1/4 x 1-1/8 Woodruff Rear Wheel Hub Mounting	75	450026	1	Pin, 1/8 x 3/4 Cotter
29	448188	2	Lockwasher, 1-1/8 Med Rear Wheel Hub Mounting	76	352010	1	Rod, Brake
30	443842	2	Nut, 1-1/8-12 Hex Jam Rear Wheel Hub Mounting	77	443106	1	Nut, 3/16-18 Hex, Brake Adjustment Nut
31	446154	6	Lockwasher, 1/2 Hvy Transaxle to Frame Mtg	78	345272	1	Spring, Brake Pedal Return Collar
32	400428	2	Screw, 1/2-13 x 2-3/4 Hex Hd Cap Brake & Transaxle to Frame Mounting, L.H.	79	343130	1	Collar
33	400410	2	Screw, 1/2-13 x 1-3/4 Hex Hd Cap Transaxle to Frame Mtg R.H.	80	412004	1	Screw, 1/4-20 x 3/8 Sq Hd Set
34	400410	1	Screw, 1/2-13 x 1-3/4 Hex Hd Cap Transaxle to Frame Mtg Upper Front, L.H.	81	315288	10	Bolt, Rear Wheel
35	351632	1	Spacer, L.H. Upper Transaxle Mtg	82A		2	Wheel, Rear
36	400404	1	Screw, 1/2-13 x 1 Hex Hd Cap Transaxle to Frame Mounting Upper Front, R.H.	82B		2	Tire, Wide Base Rear 23 x 8.50-12
37	351573	1	Bracket, Bell Crank Mounting	83	158963	1	Brake Lock Pawl Assembly
38	448130	2	Lockwasher, 1/4 Hvy, Bell Crank Bracket Mounting	84	352098	1	Rod, Brake Lock Actuator
39	400106	2	Screw, 1/4-20 x 5/8 Hex Hd Cap Bell Crank Bracket Mounting	85	451327	1	Pin, 1/8 x 5/8 Roll, Actuator Rod to Bracket Mounting
40	335227	1	Bell Crank	86	454012	1	Washer, Shakeproof
41	451487	1	Pin, 3/8 x 1-1/4 Clevis, Bell Crank Mounting Pivot	87	450026	1	Pin, 1/8 x 3/4 Cotter, Brake Lock to Frame Mounting
42	450014	1	Pin, 3/32 x 3/4 Cotter, Bell Crank Mounting Pivot	88	453011	1	Washer, 3/8 SAE Flat, Brake Lock to Frame Mounting
43	352142	1	Pin, Bell Crank to Shift Rail Mtg	89	315244	1	Spring, Brake Lock Release
44	450014	1	Pin, 3/32 x 3/4 Cotter, Bell Crank to Shift Rail Mounting	90	308144	1	Washer, Release Spring Mounting
45	454012	1	Washer, Shakeproof, Bell Crank Mounting Pivot	91	453009	1	Washer, 5/16 SAE, Between Spring & Grommet
46	351636	1	Lever, Shift	92	352611	1	Grommet, Parking Brake
47	453011	2	Washer, 3/8 SAE	93	344895	1	Pedal, Hydro
				94	345020	1	Pedal, Brake
				95	352513	1	Spacer, Hydro Pedal
				96	352514	1	Spacer, Brake Pedal
				97	448148	2	Lockwasher, 7/16 Hvy, Pedal Mtg
				98	400390	1	Screw, 7/16-20 x 4-1/2 Hex Hd Hydro Pedal to Arm Mounting
				98A	400353	1	Screw, 7/16-20 x 3 Hex Hd, Brake Pedal to Arm Mounting

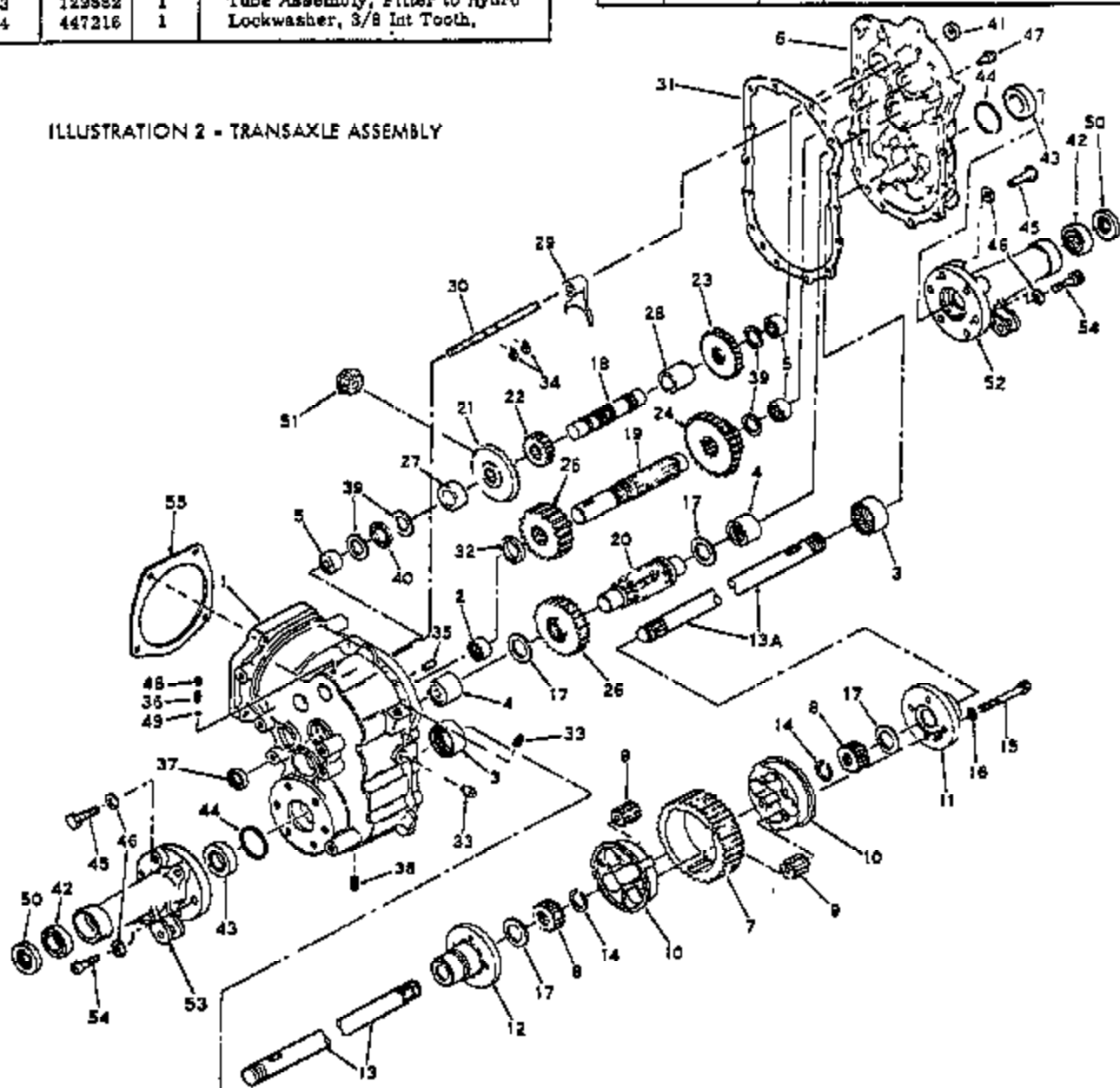
\*For Service or Replacement, See Your Dealer

†Service On Exchange Basis

ALWAYS GIVE SERIAL NUMBER WHEN ORDERING PARTS

Ref. No.	Part No.	Quan.	Description	Ref. No.	Part No.	Quan.	Description
99	351711	1	Arm, Reverse	115	446142	1	Stud Mounting
99A	453013	2	Washer, 7/16 Pedals to Arms	116	443110	1	Lockwasher, 3/8 Hvy. Stud Mtg
100	400282	1	Screw, 3/8-16x1 Hex Hd, Reverse Arm Mounting	117	352501	1	Nut, 3/8-16 Hex
101	463011	1	Washer, 3/8 SAE, Reverse Arm Mounting	118	453011	2	Spring, Hydro Control
102	444762	1	Nut, 3/8-16 Hex, C/Lock, Reverse Arm Mounting	119	480028	2	Washer, 3/8 SAE, Spring Mtg
103	315208	1	Knob, Parking Brake	120	351313	1	Pin, 1/8x1 Cotter, Spring Mtg
104	129886	1	Base, Filter Mounting	121	129854	1	Vent, Air
105	129885	1	Filter	122	461489	1	Tube Assembly, Hydro to Filter (12 H.P. Hydro Tractor Only)
106	352478	1	Bracket, Filter Mounting	123	460312	1	Pin, 1/2x1-15/16 Clevis, Hitch Pin
107	444742	1	Nut, 3/4-18 Hex Jam	124	126339	1	Hair Pin Cotter, Hitch Pin Retaining
108	352477	2	Connector, Male	125	447022	2	Safety Switch
109	451385	4	Pin, 3/16x1-1/4 Roll	126	343785	1	Lockwasher, Ext Tooth, Safety Switch Mtg
110	352474	1	Spacer, Filter Mounting	127	343784	2	Boot, Safety Switch
111	352476	1	Stud, Hydro & Filter Mounting				Nut, Safety Switch Mtg
112	443110	1	Nut, 3/8-16 Hex				
113	129882	1	Tube Assembly, Filter to Hydro				
114	447216	1	Lockwasher, 3/8 Int Tooth.				

ILLUSTRATION 2 - TRANSAXLE ASSEMBLY



ALWAYS GIVE SERIAL NUMBER WHEN ORDERING PARTS

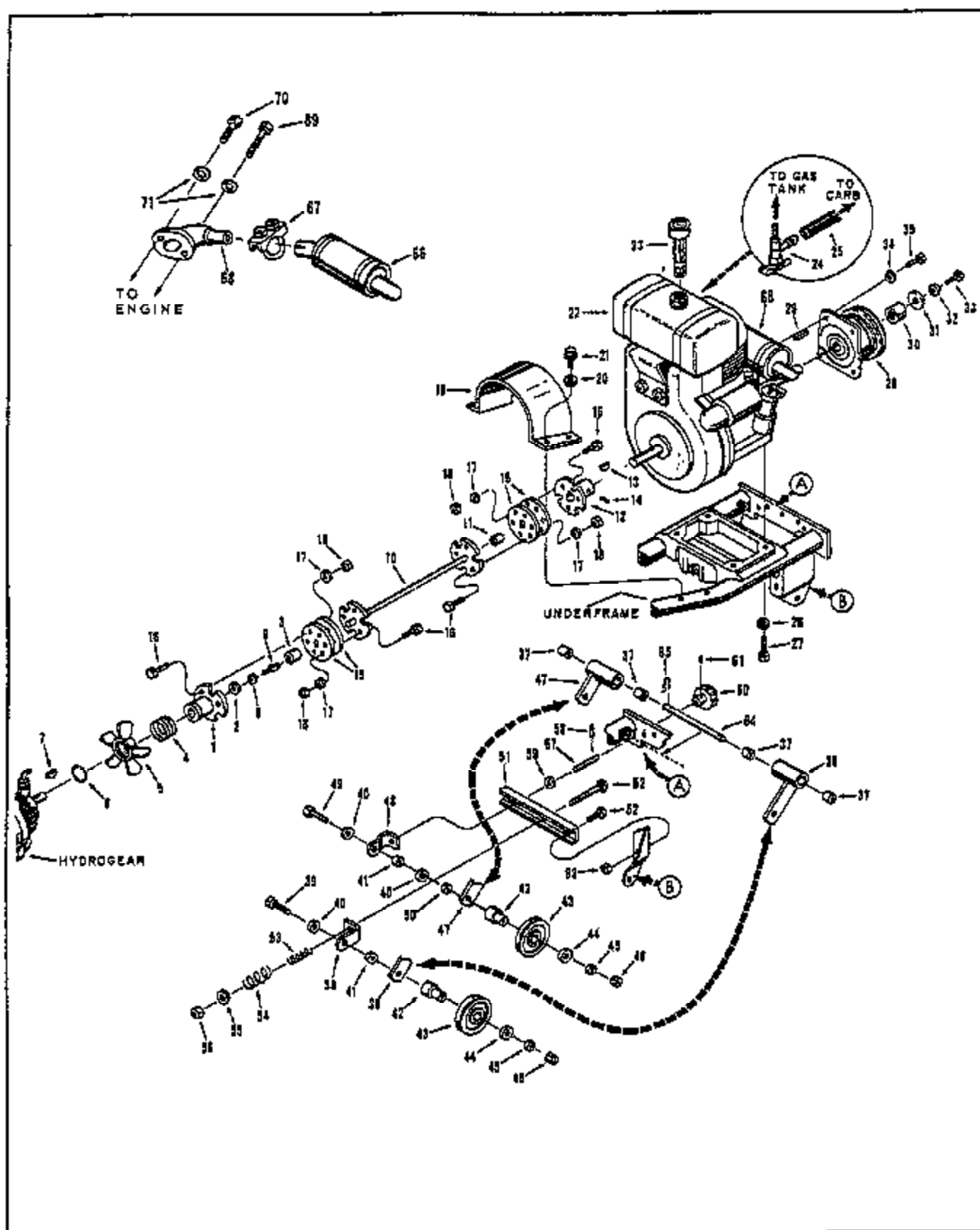
**PARTS LIST - ILLUSTRATION 2 - TRANSAXLE ASSEMBLY**  
 Tecumseh Products Company - Lauson Power Products Parts Dept Division  
 Grafton, Wisconsin

Ref. No.	Part No.	Description
1	770060	Case Assembly, Transaxle (Incl Nos. 2 thru 5)
2	780097	Bearing, Needle
3	780098	Bearing, Needle
4	780099	Bearing, Needle
5	780100	Bearing, Needle
6	772066	Cover Assembly, Transaxle (Incl 3, 4 & 5)
7	778084	Gear, Ring
8	778085	Gear, Ring
9	778086	Gear, Pinion
10	786084	Core, Body
11	774199	Carrier, Differential
12	774200	Carrier, Differential
13	774228	Axle, Left Hand
13A	774225	Axle, Right Hand
14	792062	Ring, Snap
15	792063	Screw, 3/8-16 x 3-5/16 Hex Hd
16	792011	Lockwasher, 3/8"
17	780101	Washer, Thrust
18	778118	Shaft, Counter
19	778119	Shaft, Brake
20	778120	Pinion, Output
21	778087	Gear, Bevel (36 teeth)
22	778088	Gear, Spur (16 teeth)
23	778099	Gear, Spur (20 teeth)
24	778100	Gear, Cluster (23 & 27 teeth)
25	778102	Gear, Spur (17 teeth)
26	778103	Gear, Output (33 teeth)
27	788055	Spacer
28	788056	Spacer
29	784195	Fork, Shift
30	784196	Rod, Shift
31	788047	Gasket, Case & Cover
32	780005	Spacer
33	792010	Plug, Pipe
34	792064	Ring, Snap
35	786025	Pin, Dowel
36	792003	Spring
37	788008	Seal, Oil
38	792019	Plug, Magnetic Drain
39	780045	Washer, Thrust
40	780012	Bearing, Thrust
41	788034	Seal, Oil
42	780103	Bearing, Ball
43	788104	Bearing, Thrust
44	788048	Seal, Square Cut
45	792085	Screw, 1/2-13 x 1-1/2 Hex Hd
46	792066	Lockwasher, 1/2"
47	792087	Screw, 5/16-18 x 1 Thrd Forming Hex Hd
48	792058	Screw, 1/4-20 x 1/2 Set
49	792004	Ball, Steel
50	788049	Seal, Oil
51	778093	Pinion, Bevel
52	782039	Housing, Axle
53	782040	Housing, Axle
54	792088	Screw, 1/2-13 x 1-1/2 Allen Hd Cap
55	788050	Gasket

For service see your Tecumseh Dealer, or  
 contact Pearless Division, Tecumseh Products Co.

ALWAYS GIVE SERIAL NUMBER WHEN ORDERING PARTS

REAR DRIVE SHAFT AND HYDRAULIC PUMP AND VALVE



ALWAYS GIVE SERIAL NUMBER WHEN ORDERING PARTS

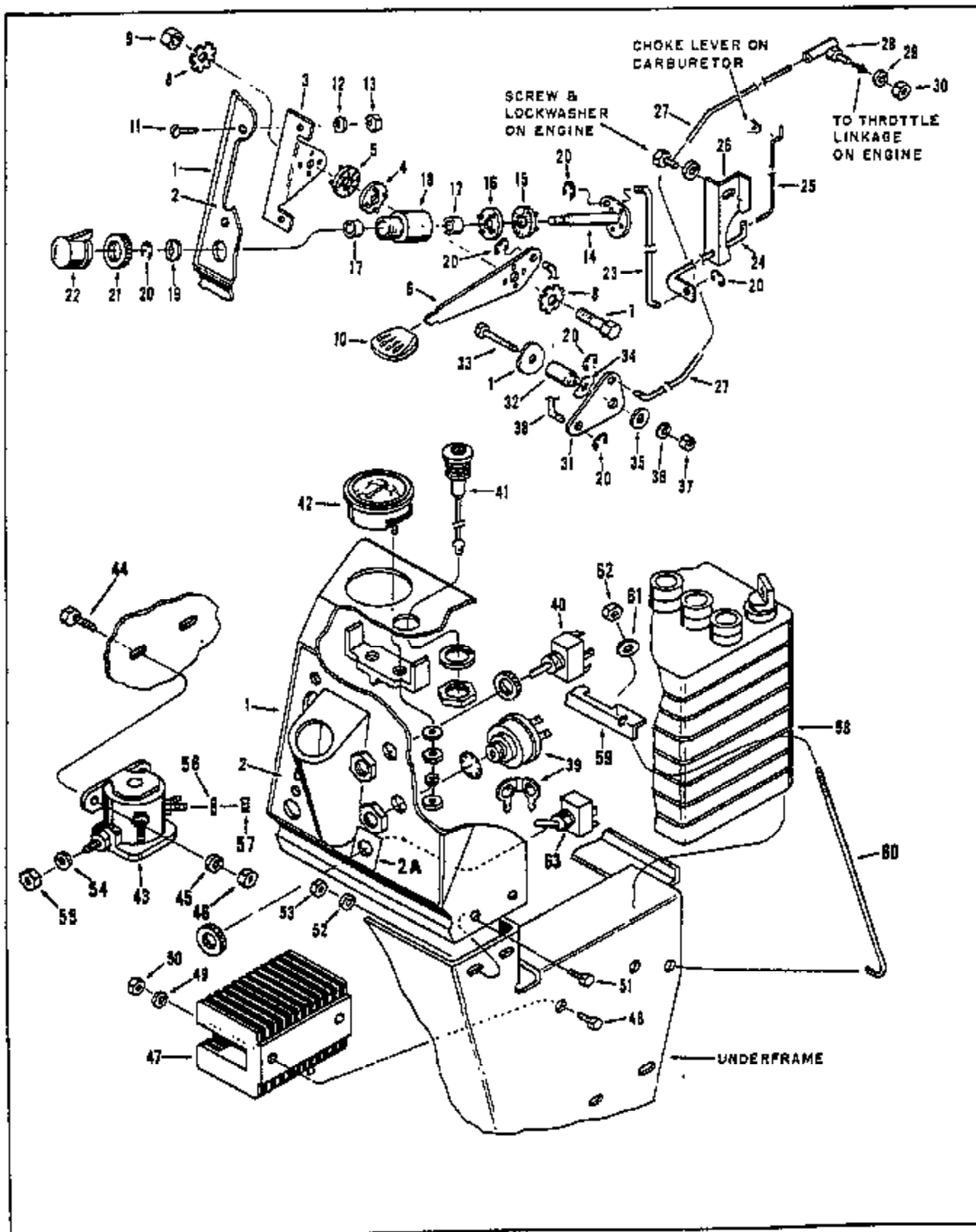
## PARTS LIST - ILLUSTRATION 13 - ENGINE, DRIVESHAFT &amp; FRONT POWER TAKE-OFF ASSEMBLY

Ref. No.	Part No.	Quan.	Description
1	166483	1	Coupling Assembly
2	308537	1	Washer, Coupling to Hydro Mounting
3	313577	1	Bearing, Drive Shaft Pilot
4	317318	1	Spring, Fan Mounting
5	335219	1	Fan
6	456456	1	Ring, Retaining, Fan to Coupling Mounting
7	463029	1	Key, 3/16 x 5/8 Woodruff, Coupling to Hydro Mounting
8	446136	1	Lockwasher, 5/16 Hvy, Coupling to Hydro Mounting
9	350752	1	Screw, Coupling to Hydro Mounting
10	129943	1	Coupling Shaft Assembly
11	351534	1	Bushing, Drive Shaft Pivot
12	129544	1	Front Coupling Assembly
13	483025	1	Key, 3/16 x 1 Woodruff, Front Coupling Mounting
14	412033	1	Screw, 3/8-16 x 1 1/2 Sq Hd Set, Front Coupling Mounting
15	350756	4	Disc, Coupling
16	600282	12	Screw, 3/8-16 x 1 Hex Hd
17	453011	12	Washer, 3/8 Flat
18	444782	12	Nut, 3/8-16 Hex C/Lock
19	335288	1	Shield, Coupling
20	453023	4	Washer, 1/4 Flat
21	406695	4	Screw, 1/4-20 x 3/16 Hex Hd Sems, Shield Mounting
22		1	Engine, Kohler K-361-AS, 12 H.P. (For 12 H.P. Tractor only)
22		1	Engine, Kohler K-321-AS, 14 H.P. (For 14 H.P. Tractor only)
23	158886	1	Fuel Tank Cap & Gauge
24	108557	1	Shut-off Valve, Fuel Tank
25	351574	1	Line, Fuel
26	446142	4	Lockwasher, 3/8 Hvy, Engine to Frame Mounting
27	400264	4	Screw, 3/8-16 x 1-1/4 Hex Hd, Engine to Frame Mounting
28	121487	1	Electric P.T.O. Clutch
29	351649	1	Key, Electric Clutch Mounting
30	351636	1	Spacer, Electric Clutch Mounting
31	345643	1	Washer, Clutch Retaining
32	446148	1	Lockwasher, 7/16 Hvy, Clutch Retaining
33	400872	1	Screw, 7/16-20 x 1-1/4 Hex Hd, Clutch Retaining
34	446146	4	Lockwasher, 7/16 Hvy, Clutch to Crankcase Mounting
35	400830	4	Screw, 7/16-14 x 3/4 Hex Hd, Clutch to Crankcase Mounting
36	129785	1	Idler Arm & Spring Tension Assembly (Includes 2 - Ref. 37)
37	352059	4	Bushing, Idler Arm Pivot

Ref. No.	Part No.	Quan.	Description
38	335416	1	Bracket, Idler Spring Retaining
39	400272	1	Screw, 3/8-16 x 2-1/4 Hex Hd, Idler Pulley & Spring Bracket Retaining
40	310711	3	Washer, Spring Bracket Retaining
41	307244	2	Spacer, Spring Bracket Pivot
42	344952	2	Idler, Stand Off
43	330555	2	Pulley Idler
44	453011	2	Washer, Idler Pulley Mounting
45	446142	2	Lockwasher, 3/8 Hvy, Idler Pulley Mounting
46	443110	2	Nut, 3/8-16 Hex, Idler Pulley Mounting
47	129785	1	Adjustable Idler Assembly (Includes 2 - Ref. 37)
48	335417	1	Bracket, Idler Adjusting Screw
49	400274	1	Screw, 3/8-16 x 2-1/2 Hex Hd, Idler Pulley & Adjusting Bracket Retaining
50	210807	1	Spacer, Idler Adjusting Bracket Mounting
51	335418	1	Bracket, Idler Spring & Adjusting Screw
52	441680	1	Bolt, 3/8-16 x 5-1/2 Rd Hd Sq Nk Carriage, Idler Tension Spring Mounting
53	352060	1	Spring, Compression Idler Tension (Inside)
54	352061	1	Spring, Compression Idler Tension (Outside)
55	310711	1	Washer, Spring Retaining
56	444810	1	Nut, 3/8-16 Hex Flex-Loc, Spring Retaining
57	352066	1	Rod, Pulley Adjusting
58	481359	1	Pin, 1/8 x 3/4 Roll, Pulley Adjusting Rod Retainer
59	453011	1	Washer, 3/8 Flat
60	343855	1	Knob, Pulley Adjustment
61	412061	1	Screw, #10-32 x 1/2 Sq Hd Set, Knob Mounting
62	400292	2	Screw, 3/8-16 x 1 Hex Hd, Idler Spring & Adjusting Screw Bracket to Frame Mounting
63	444810	2	Nut, 3/8-16 Hex Flex-Loc, Idler Spring & Adjusting Screw Bracket to Frame Mounting
64	352067	1	Rod, Idler Pivot
65	460318	2	Cotter, Hair Pin, Idler Pivot Rod to Frame Mounting
66	129619	1	Muffler Assembly
67	348958	1	Clamp, Muffler Mtg
68	239087	1	Manifold, Exhaust
69	400197	1	Screw, 5/16-18 x 2-1/4 Hex Hd
70	400189	1	Screw, 5/16-18 x 1-1/4 Hex Hd
71	446138	2	Lockwasher, 5/16 Hvy

ALWAYS GIVE SERIAL NUMBER WHEN ORDERING PARTS

FIG. 5. CHOKE LEVER AND THROTTLE LINKAGE



ALWAYS GIVE SERIAL NUMBER WHEN ORDERING PARTS



## PARTS LIST - ILLUSTRATION - INSTRUMENT PANEL

Ref. No.	Part No.	Quan.	Description
1	205296	1	Panel, Instrument
2	338429	1	Decal, Instrument Panel
2A	352121	1	Decal, Light Switch
3	351568	1	Bracket, Throttle Lever
4	351578	1	Washer, Ratchet (Male)
5	351577	1	Washer, Ratchet (Female)
6	351568	1	Lever, Throttle Control
7	400148	1	Screw, 1/4-28 x 3/4 Hex Hd, Control Arm Mounting
8	454002	2	Washer, Shakesproof, Control Arm Tension
9	444714	1	Nut, 1/4-28 Hex C/Lock, Control Arm Mounting
10	345586	1	Knob, Throttle Control
11	404018	2	Screw, 1/4-20 x 5/8 Truss Hd Mach, Control Assembly Mtg
12	446130	2	Lockwasher, 1/4 Hvy, Control Assembly Mounting
13	443102	2	Nut, 1/4-20 Hex, Control Assembly Mounting
14	158847	1	Pivot Shaft & Arm Assembly
15	351576	1	Washer, Ratchet (Male)
16	351577	1	Washer, Ratchet (Female)
17	351578	3	Bushing, Control Pivot
18	351576	1	Housing, Choke Control
19	454033	1	Washer, Shakesproof, Choke Control Assembly
20	458462	8	Ring, Retaining, Choke & Throttle Control
21	343786	1	Nut, 9/16-24 Rd Kn, Choke Control Mounting
22	352058	1	Knob, Choke Control
23	351578	1	Link, Choke Control, Rear
24	351580	1	Rod, Choke Control
25	351582	1	Link, Choke Control, Front
26	351581	1	Bracket, Control Rod Pivot
27	338228	1	Rod, Throttle Control
28	158864	1	Ball Joint
29	448118	1	Lockwasher, #10 Hvy, Throttle Rod to Engine Mounting
30	444312	1	Nut, #10-32 Hex, Throttle Rod to Engine Mounting
31	351572	1	Bell Crank, Throttle Control
32	351571	1	Trunnion, Throttle Control
33	400118	1	Screw, 1/4-20 x 1-1/2 Hex Hd, Bell Crank Mounting
34	454028	1	Washer, Shakesproof, Bell Crank Mtg

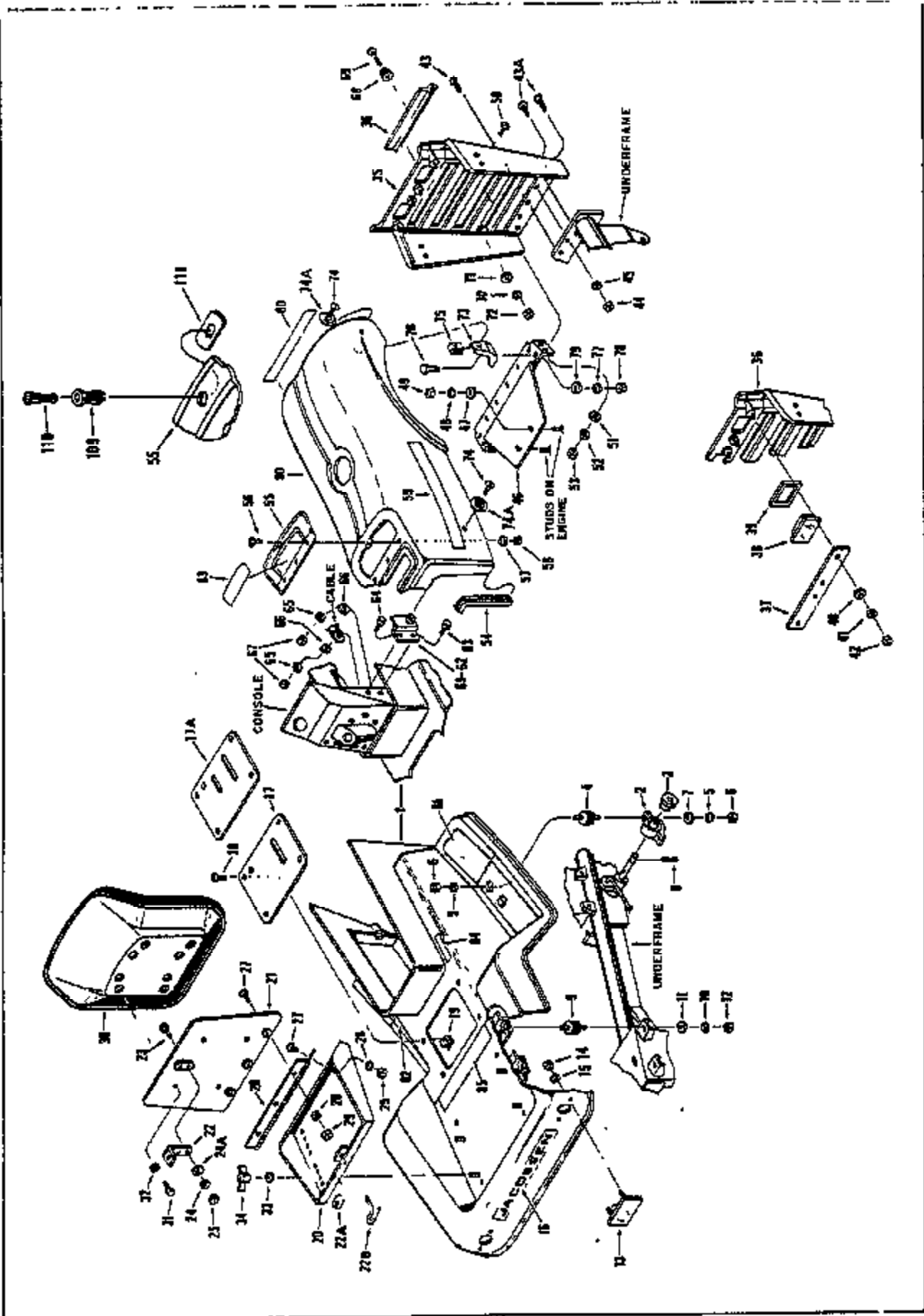
Ref. No.	Part No.	Quan.	Description
35	452002	1	Washer, 1/4 SAE, Bell Crank Mounting
36	446130	1	Lockwasher, 1/4 Hvy, Bell Crank Mounting
37	443102	1	Nut, 1/4-20 Hex, Bell Crank Mounting
38	331870	1	Rod, Throttle Lever
39	128848	1	Ignition Switch Assembly (Incls 2 Keys, Int. Tooth Lockwasher & Hex Mounting Nut)
40	158865	1	Switch, Electric Clutch (Incls Hex Nut & Kauried Face Nut)
41	159181	1	Pilot Light with Wire
42	107917	1	Ammeter
43	125070	1	Solenoid, Starter
44	400108	2	Screw, 1/4-20 x 3/4 Hex Hd, Solenoid Mounting
45	446130	2	Lockwasher, 1/4 Hvy, Solenoid Mounting
46	443102	2	Nut, 1/4-20 Hex
47	352382	1	Regulator, Rectifier
48	400108	2	Screw, 1/4-20 x 3/4 Hex Hd, Regulator Mounting
49	446130	2	Lockwasher, 1/4 Hvy, Regulator Mounting
50	443102	2	Nut, 1/4-20 Hex, Regulator Mtg
51	400108	5	Screw, 5/16-18 x 5/8 Hex Hd, Instrument Panel Mounting
52	446136	4	Lockwasher, 5/16 Hvy, Instrument Panel Mounting
53	443108	5	Nut, 5/16-18 Hex, Instrument Panel Mounting
54	446138	2	Lockwasher, 5/16 Hvy, Cables to Solenoid Mounting
55	443808	2	Nut, 5/16-24 Hex Jam, Cables to Solenoid Mounting
56	448118	2	Lockwasher, #10 Hvy, Cables to Solenoid Mounting
57	444312	2	Nut, #10-32 Hex, Cables to Solenoid Mounting
58*		1	Battery, 12 Volt
59	345637	1	Clamp, Battery Hold Down
60	352488	2	Rod, Battery Hold Down
61	453023	2	Washer, Battery Hold Down
62	444708	2	Nut, 1/4-20 Hex C/Lock, Battery Hold Down
63†	158892	1	Switch, Head Light

\* For service or replacement, see your Dealer.

† For 14 H.P. Tractor only.

ALWAYS GIVE SERIAL NUMBER WHEN ORDERING PARTS

ILLUSTRATION 5 - BODY AND SEAT ASSEMBLY



ATTENTION: THIS GROUP INCLUDES SEVERAL "OPTIONAL" PARTS

## ILLUSTRATION 5 and 1A - BODY AND SEAT ASSEMBLY

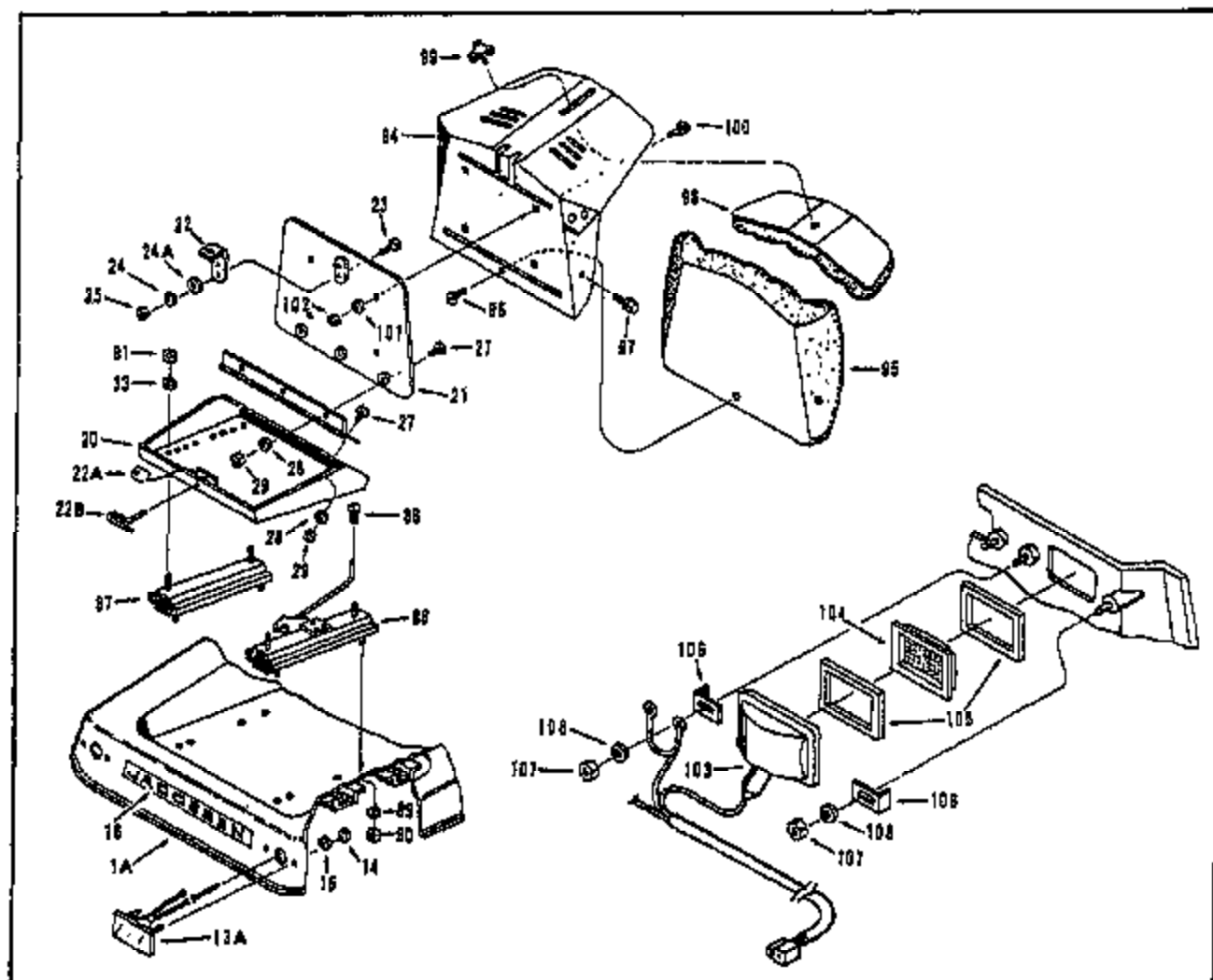
Ref. No.	Part No.	Quan.	Description	Ref. No.	Part No.	Quan.	Description
1*	116284	1	Fender Body & Footboard Assem	44	443102	5	Nut, 1/4-20 Hex, Front Cowling to Frame Mounting
1A**	116243	1	Fender Body & Footboard Assem	45	446130	5	Lockwasher, 1/4 Hvy, Front Cowling to Frame Mounting
2	156984	2	Bar Mounting Assembly	46	330537	1	Support, Cowling
3	311441	2	Bushing	47	453011	2	Washer, 3/8 SAE, Cowling Support to Engine
4	351752	4	Mounting, Flexible (Front)	48	448142	2	Lockwasher, 3/8 Hvy, Cowling Support to Engine Mounting
5	446130	5	Lockwasher, 1/4 Hvy Body to Brakeshaft Mounting	49	443110	2	Nut, 3/8-16 Hex, Cowling Support to Engine Mounting
6	443102	8	Nut, 1/4-20 Hex Body to Brakeshaft Mounting	50	404088	4	Screw, 5/16-18 x 3/4 Truss Hd Mach, Front Cowling To Bracket Mounting
7	453023	3	Washer, Flat 1/4 SAE	51	453009	4	Washer, 5/16 SAE, Front Cowling to Bracket Mounting
8	481397	4	Pin, 1/4x1-1/4 Roll Body Mounting Locators	52	446130	4	Lockwasher, 5/16 Hvy Front Cowling to Bracket Mtg
9	351758	4	Mounting, Flexible (Rear)	53	443108	4	Nut, 5/16-18 Hex, Front Cowling to Bracket Mounting
10	446130	4	Lockwasher, 5/16 Hvy Rear Body to Frame Mounting	54	352270	1	Molding, Hood
11	453009	4	Washer, 5/16 SAE Rear Body to Frame Mtg	55	158778	1	Battery Cover
12	443108	4	Nut, 5/16-18 Hex Rear Body to Frame Mounting	56	403729	3	Screw, 10-24 x 1/2 C/R Oval Hd Mach
13*	351937	2	Reflector Assembly	57	448118	3	Lockwasher, #10 Hvy Battery Cover to Hood Mounting
13A**	129677	2	Tail Light Assembly	58	444310	3	Nut, 10-24 Hex Battery Cover to Hood Mtg
14	444312	4	Nut, 10-32 Hex	59*	330588	2	Decal, Hood Side, 12 H.P.
15	446118	4	Lockwasher, #10 Hvy	59**	330586	2	Decal, Hood Side, 14 H.P.
16	351946	1	Decal, Name (Rear)	60	352468	1	Decal, Name Hood Front
17*	159281	1	Insert, Body	61	159256	1	Hood Fastener Bracket, R.H.
17A**	159282	1	Insert, Body	62	159257	1	Hood Fastener Bracket, L.H.
18	404014	4	Screw, 1/4-20 x 1/2 Cross Recess Truss Hd Insert Mounting	63	400108	3	Screw, 1/4-20 x 3/4 Hex Hd Hood Fastener Bracket Mounting
19	446246	4	Nut, Tinnerman, Insert Mtg	64	400112	1	Screw, 1/4-20 x 1 Hex Hd Hood Fastener Bracket Mtg
20	330531	1	Tool Box Assembly	65	446130	4	Lockwasher, 1/4 Hvy, Hood Fastener Bracket Mounting
21	330530	1	Plate, Seat Mounting	66	453023	4	Washer, 1/4 SAE, Hood Fastener Bracket Mounting
22	352512	1	Retainer, Tool Box	67	443102	4	Nut, 1/4-20 Hex, Hood Fastener Bracket Mounting
22A	352518	1	Spring, Seat Latch	68	343807	3	Bumper, Rubber, Hood Support
22B	352510	1	Latch, Tool Box	69	402060	2	Screw, 8-32 x 5/8 Sl. Hd Hd Mach
23	403582	2	Screw, 10-24 x 1/2 Hex Hd Spring to Seat Plate Mtg	70	446112	2	Lockwasher, #6 Hvy
24	446118	2	Lockwasher #10 Hvy Retainer to Seat Plate Mtg	71	453003	2	Washer, #8 SAE
24A	453002	2	Washer #10, Retainer to Seat Plate Mounting	72	444308	2	Nut, 8-32 Hex
25	444310	2	Nut, 10-24 Hex Spring to Seat Plate Mtg	73	335278	2	Bracket, Hood Fastener, Front
26	351886	1	Hinge, Tool Box	74	404058	4	Screw, 5/16-18 x 3/4 C/R Truss Hd Mach
27	404014	5	Screw, 1/4-20 x 1/2 Phillips Tool Box Hinge Mounting	74A	454038	4	Lockwasher, 5/16 Dome
28	446130	6	Lockwasher, 1/4 Hvy, Tool Box Hinge Mounting	75	443270	2	Nut, Tinnerman, Hood Fastener, Front
29	443102	8	Nut, 1/4-20 Hex, Tool Box Hinge Mounting	76	400108	4	Screw, 1/4-20 x 5/8 Hex Hd Cap Hood Fastener Bracket Mtg
30*	116258	1	Seat Assembly	77	446130	4	Lockwasher, 1/4 Hvy, Hood Fastener Bracket Mounting
31*	400180	4	Screw, 5/16-18 x 1/2 Hex Hd Seat Mounting	78	443102	4	Nut, 1/4-20 Hex, Hood Fastener Bracket Mounting
32*	446130	4	Lockwasher, 5/16 Hvy, Seat Mtg	79	453023	4	Washer, 1/4 SAE Hood Fastener Bracket Mounting
33*	446130	4	Lockwasher, 5/16 Hvy, Tool Box to Body Mounting	80	121489	1	Hood
34*	445620	4	Nut, 5/16-18 Wing, Tool Box to Body Mounting	81	335501	1	Pad, R.H. Foot
35	328801	1	Cowling, Front	82	335502	1	Pad, L.H. Foot
36	338168	4	Trim, Extrusion	83	335554	2	Decal, Battery Cover
37*	351821	1	Bracket, Mock Headlight	84*	352101	1	Decal, Manual Lift
38*	351936	2	Lens, Headlight	85*	335438	1	Decal, Instruction, 12 H.P. Tract.
39*	345468	2	Gasket, Headlight Lens	85**	335438	1	Decal, Instruction, 14 H.P. Tract.
40*	453023	4	Washer, Flat 1/4 SAE Mock Headlight Mounting	86**	121506	1	Seat Slide Bracket Assem R.H.
41*	446130	4	Lockwasher, 1/4 Hvy Mock Headlight Mounting	87**	129068	1	Seat Slide Bracket Assem L.H.
42*	443102	4	Nut, 1/4-20 Hex Mock Headlight Mtg				
43	404020	3	Screw, 1/4-20 x 7/8 Truss Hd Mach, Front Cowling to Frame Mtg				
43A	404024	2	Screw, 1/4-20 x 1-1/4 Truss Hd Mach, Front Cowling to Frame Mtg				

\*12 H.P. Tractor Only

\*\*14 H.P. Tractor Only

ALWAYS GIVE SERIAL NUMBER WHEN ORDERING PARTS

ILLUSTRATION 51 - BODY AND SEAT ASSEMBLY



## PARTS LIST

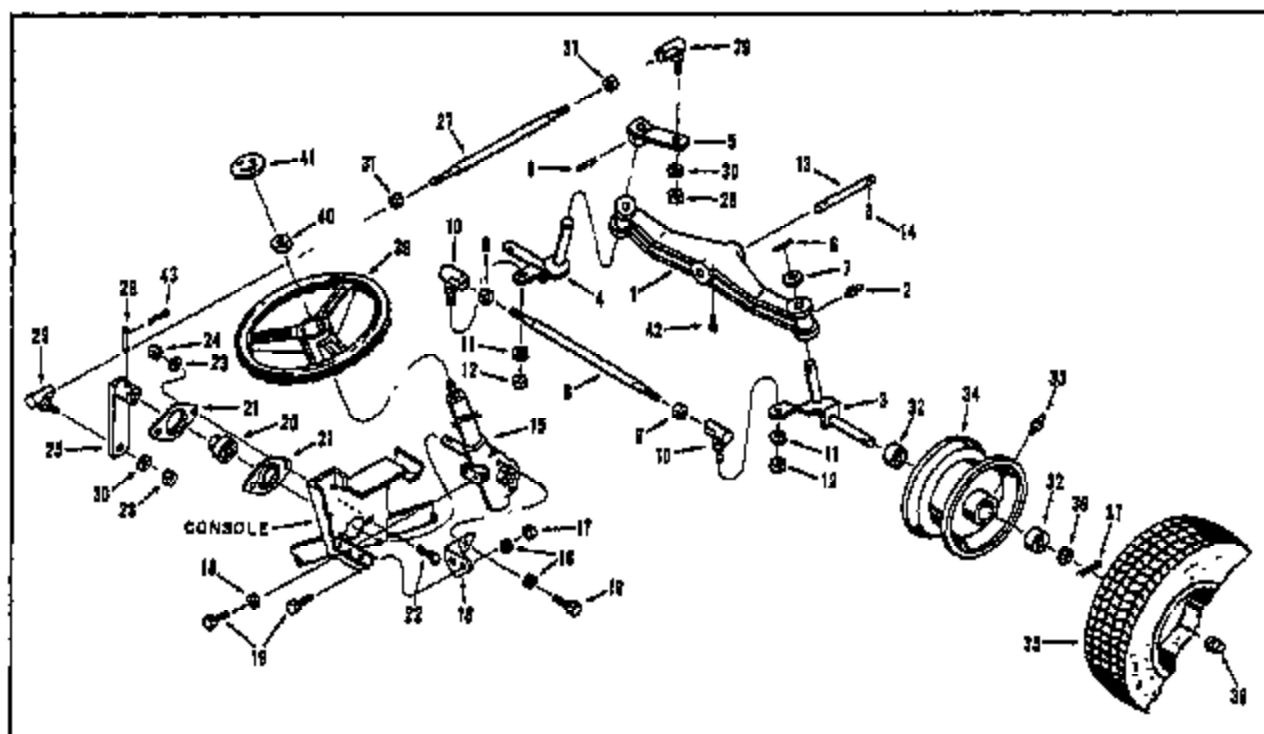
Ref. No.	Part No.	Quan.	Description
88**	381783	1	Knob, Seat Adjustment
89**	446136	4	Lockwasher, 5/16 Hvy, Slide Bracket & Body to Frame Mtg
90**	443108	4	Nut, 5/16-24 Hex, Slide Bracket & Body to Frame Mounting
91**	446136	4	Lockwasher, 5/16 Hvy, Tool Box to Seat Slide Mounting
92**	443108	4	Nut, 5/16-24 Hex, Tool Box to Seat Slide Mounting
93**	158818	1	Seat Assembly (Includes Ref. Nos. 94-99 Incl.)
94**	330524	1	Pan, Seat
95**	335256	1	Seat Cushion & Support Plate
96**	402560	1	Screw, 1/4-20 x 3/8 Slotted Flat Hd Machine Cushion Mounting
97**	403726	2	Screw, 1/4-20 x 1/2 Hex Hd Mach w/Lockwasher Cushion Mtg

\*\*14 H.P. Tractor Only

Ref. No.	Part No.	Quan.	Description
98**	335255	1	Backrest, Seat
99**	351669	1	Knob, Back Adjusting
100**	440078	4	Bolt, 5/16-16 x 3/4 Carriage Seat to Tool Box Mounting
101**	446136	4	Lockwasher, 5/16 Hvy Seat to Tool Box Mounting
102**	443108	4	Nut, 5/16-18 Hex, Seat to Tool Box Mounting
103**	121507	1	Headlight Selector Assembly (Incl. 2 Ref No. 104 & 4 Ref No. 105)
104**	351936	2	Headlight Lens
105**	545488	4	Headlight Gasket
106**	381947	4	Clip, Headlight Mounting
107**	443102	4	Nut, 1/4-20 Hex, Headlight Mtg
108**	446130	4	Lockwasher, 1/4 Hvy Headlight Mounting
109	382598	1	Grommet, Latch
110	352599	1	Plunger, Latch
111	445220	1	Nut, Tinnorman

ALWAYS GIVE SERIAL NUMBER WHEN ORDERING PARTS

ILLUSTRATION 13 - STEERING ASSEMBLY



## PARTS LIST

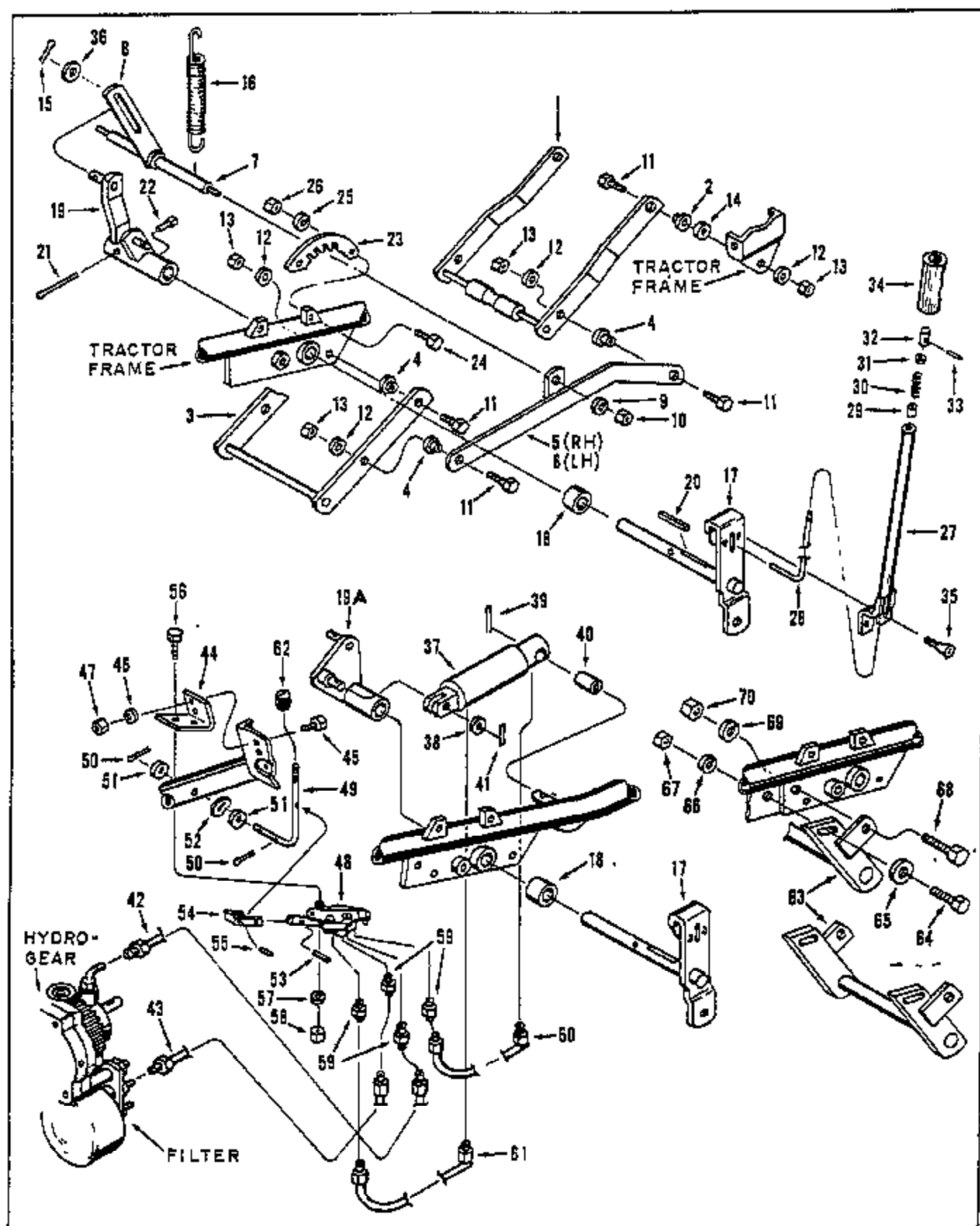
Ref. No.	Part No.	Quan.	Description	Ref. No.	Part No.	Quan.	Description
1	205271	1	Front Axle	22	441602	2	Bolt, 5/16-18x3/4 Sq. Neck
2	471219	2	Grease Fitting	23	446136	2	Carriage Bearing & Flange Mtg
3	128628	1	Spindle Assembly, RH				Lockwasher, 5/16 Hvy. Bearing
4	128629	1	Spindle Assembly, LH				and Flange Mounting
5	158844	1	Steering Arm Assembly	24	443106	2	Nut, 5/16-18 Hex. Bearing and
6	461404	2	Pin, 5/16x1-1/2 Roll, Steering				Flange Mounting
			Arm to Spindle Mtg. RH & LH	26	188836	1	Steering Arm Assembly
7	224898	1	Washer, Spindle Retainer RH	26	461410	1	Pin, 3/8x1-1/2 Roll
8	351547	1	Rod, Tie	27	351546	1	Drag Link, Steering
9	443820	2	Nut, 1/2-20 Hex Jam, Tie Rod &	28	443820	2	Nut, 1/2-20 Hex Jam, Drag Link
			Ball Joint Assembly				and Ball Joint Assembly
10	154618	2	Ball Joint Assembly	29	154618	2	Ball Joint Assembly
11	446184	2	Lockwasher, 1/2 Hvy. Tie Rod	30	446184	2	Lockwasher, 1/2 Hvy. Drag Link
			Assembly Mounting	31	443820	2	Nut, 1/2-20 Hex Jam, Drag Link
12	443820	2	Nut, 1/2-20 Hex Jam, Tie Rod				Mounting
			Assembly Mounting	32	326106	4	Bearing, Front Wheel
13	351758	1	Pin, Front Axle Mounting	32	471214	2	Grease Fitting, Front Wheel
14	461583	2	Roll Pin, 3/16x1, Pin Retainer	34*		2	Wheel, Front
			(Safety)	35*		2	Tire, Front
15†	121486	1	Steering Gear Assembly	36	302468	2	Washer, Front Wheel Mounting
16	335848	1	Brace, Steering Gear	37	460040	2	Pin, 5/32x1-1/4 Cotter, Front
17	443110	2	Nut, 3/8-16 Hex, Steering Gear				Wheel Mounting
			and Brace Mounting	38	351558	2	Cap, Front Wheel Hub
18	446142	5	Lockwasher, 3/8 Hvy	38	330525	1	Steering Wheel
			Steering Gear & Brace Mtg	40	226257	1	Cap, Steering Wheel
19	406258	5	Screw, 3/8-16x3/4 Hex Hd Cap	41	443828	1	Nut, 1/4-20 Hex Jam, C/Lock
			Steering Gear and Brace Mtg				Steering Wheel Mounting
20	350749	1	Bearing	42	413029	1	Set Screw, 3/8-16x1 Sq Hd Cup Pt
21	350748	2	Flange	43	460056	1	Pin, Cotter, Roll Pin Retainer

\* For service or replacement, see your dealer

† For service of Steering Gear, see page 18

ALWAYS GIVE SERIAL NUMBER WHEN ORDERING PARTS

ILLUSTRATION 7 - LIFTING UNIT (LIFT)



ALWAYS GIVE SERIAL NUMBER WHEN ORDERING PARTS

## PARTS LIST - ILLUSTRATION 7 - IMPLEMENT LIFT

Ref. No.	Part No.	Quan.	Description
1	129837	1	Front Hanger Assembly
2	351587	2	Bushing, Front Hanger Pivot
3	129838	1	Rear Hanger Assembly
4	351587	6	Bushing, Connecting Link & Rear Hanger
5	129832	1	Connecting Link R.H.
6	129833	1	Connecting Link L.H.
7	351592	1	Cross Bar, Connecting Link
8	158850	1	Lift Link Assembly
9	433017	2	Lockwasher, 1/2 Hvy
10	444788	2	Nut, 1/2-13 Hex C/Lock, Cross Bar Mounting
11	351585	8	Bolt, Linkage Mounting
12	463011	8	Washer, 3/8 SAE, Linkage Mtg
13	444782	8	Nut, 3/8-16 Hex, Linkage Mtg
14	314816	2	Washer
15	460028	1	Pin, Cotter, Lift Link to Lift Arm
16	352350	1	Spring
17	129831	1	Lift Lever & Pivot Shaft Assembly
18	351749	1	Spacer, Lift Arm
19*	129784	1	Lift Arm Assembly
19A**	129642	1	Lift Arm Assembly for Hydraulic Lift
20	310437	1	Key, Lift Arm Assembly to Shaft Mounting
21	460039	1	Pin, 1/8x2 Cotter, Lift Arm Assembly to Shaft Mounting
22	412014	1	Screw, 5/16-18x1 1/2 Sq Hd Set
23	385234	1	Quadrant, Lift
24	400188	2	Screw, 5/16-18x1 Hex Hd, Lift Quadrant to Frame Mounting
25	446138	2	Lockwasher, 5/16 Hvy, Lift Quadrant to Frame Mtg
26	443106	2	Nut, 5/16-18 Hex, Lift Quadrant to Frame Mounting
27*	158879	1	Handle, Lift Assembly
28*	351820	1	Rod, Lift Lever Handle
29*	310630	1	Collar, Lift Lever Plunger
30*	315344	1	Spring, Lift Lever Plunger
31*	343332	1	Washer, Lift Lever Handle

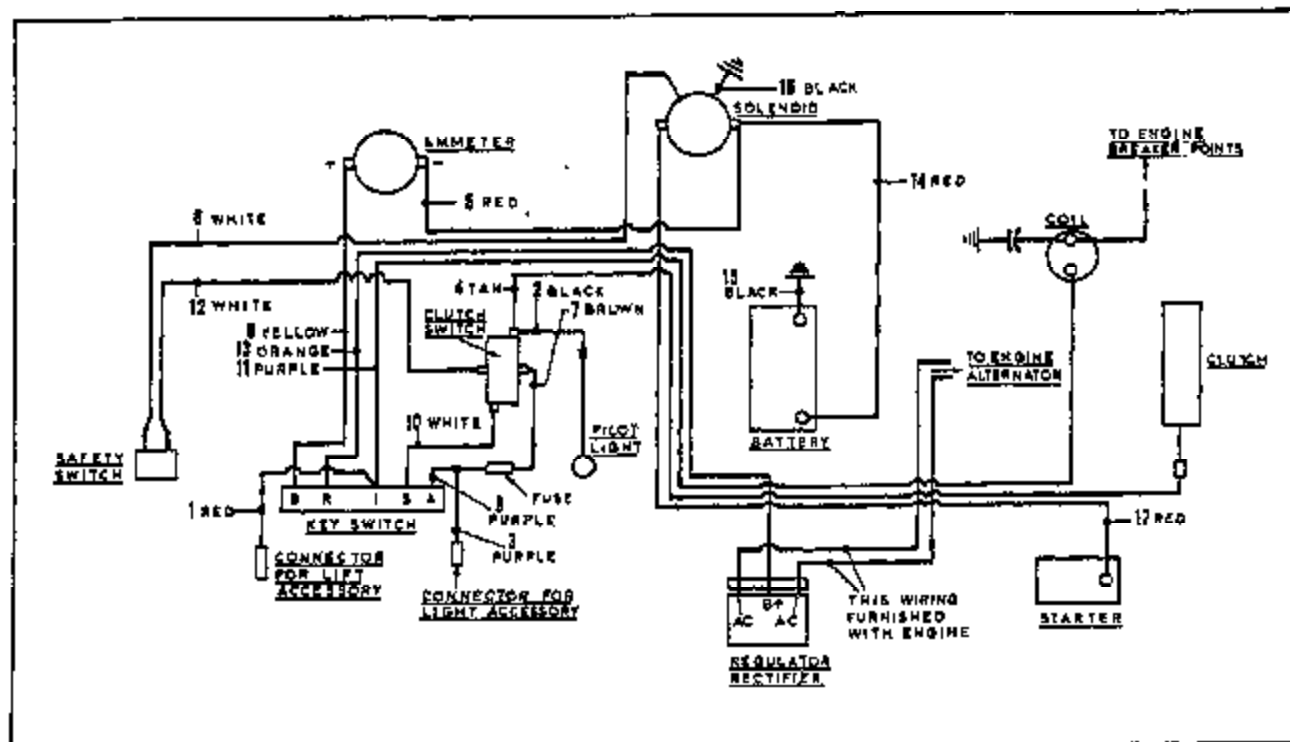
\* For 12 H.P. Tractor only.

\*\* For 14 H.P. Tractor only.

Ref. No.	Part No.	Quan.	Description
32*	315349	1	Plunger, Lift Lever
33*	461356	1	Pin, 1/8x1 1/2 Roll
34*	341833	1	Grip, Lift Handle
35*	315288	2	Bolt, Lift Handle Mounting
36	315509	1	Washer, Lift Link to Lift Arm
37**	129845	1	Cylinder, Hydraulic Lift
38**	453017	1	Washer, 17/32 Flat, Cylinder to Cotter Pin, Spacer
39**	460028	1	Pin, 1/8x1 Cotter, Cylinder to Lift Arm Mounting
40**	352143	1	Sleeve, Cylinder Mounting
41**	460030	1	Pin, 1/8x1-1/4 Cotter, Cylinder to Frame Mounting
42**	129806	1	Tube Assembly, Hydro to Valve
43**	129833	1	Tube Assembly, Valve to Filter
44**	352107	1	Bracket, Lift Valve
45**	400108	2	Screw, 1/4-20x3/4 Hex Hd, Bracket Mounting
46**	446130	2	Lockwasher, 1/4 Hvy, Bracket Mtg
47**	443102	2	Nut, 1/4-20 Hex, Bracket Mtg
48**	129876	1	Valve, Lift
49**	351781	1	Lever, Lift Valve
50**	460028	2	Pin, Cotter, 1/8x3/4, Lever to Frame Mounting
51**	453011	2	Washer, 3/8 SAE
52**	454012	1	Washer, 3/8 Shaksproof, Lever to Frame Mounting
53**	461253	1	Pin, Roll, 1/8x3/4, Rod to Adapter Mounting
54**	351799	1	Adapter, Valve Actuator
55**	461362	1	Pin, Roll, 3/32x3/4, Link Assembly to Valve Mtg
56**	400114	2	Screw, 1/4-20x1-1/4 Hex Hd, Valve Mounting
57**	448150	2	Lockwasher, 1/4 Hvy, Valve Mtg
58**	443102	2	Nut, 1/4-20 Hex, Valve Mtg
59**	351109	4	Male Connector, Tubes to Valve
60**	159105	1	Hose Assembly
61**	159106	1	Hose Assembly
62**	351837	1	Knob, Lift Handle
63	129860	1	Rear Frame Brace Assembly
64	400264	2	Screw, 3/8-16x1-1/4 Hex Hd
65	453011	2	Washer, 3/8 SAE
66	446142	2	Lockwasher, 3/8 Hvy
67	443110	2	Nut, 3/8-16 Hex
68	400406	2	Screw, 1/2-13x1-1/4 Hex Hd
69	446154	2	Lockwasher, 1/2 Hvy
70	443118	2	Nut, 1/2-13 Hex

ALWAYS GIVE SERIAL NUMBER WHEN ORDERING PARTS

ILLUSTRATION OF WIRING HARNESS



## PARTS LIST

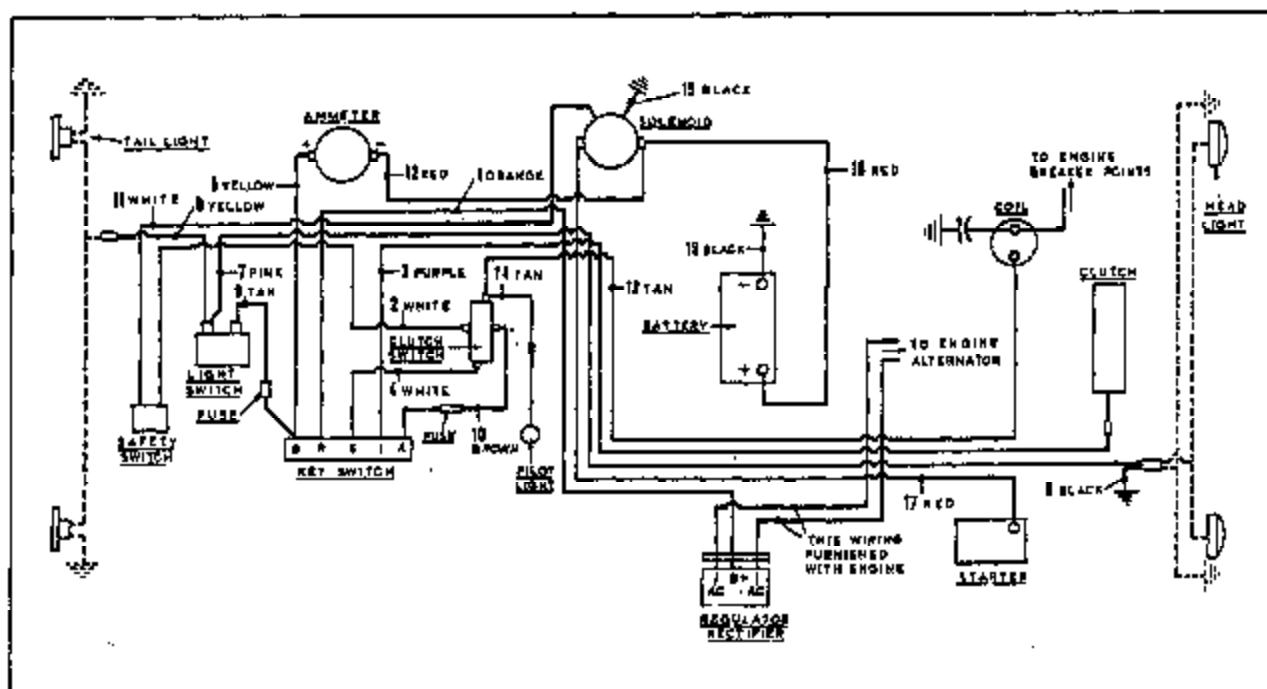
Ref. No.	Part No.	Quan.	Description
	181614	1	Wire Harness (incl Ref No. 1 through 12)
1		1	Wire, Red, Key Switch to Connector
2		1	Wire, Black, Clutch Switch to Connector
3		1	Wire, Purple, Splice to Connector
4		1	Wire, Tan, Clutch Switch to Clutch
5		1	Wire, Red, Ammeter to Solenoid
6		1	Wire, White, Safety Switch to Solenoid
7		1	Wire, Brown, Splice to Clutch Switch
8		1	Wire, Purple, Key Switch to Splice
9		1	Wire, Yellow, Ammeter to Key Switch
10		1	Wire, White, Key Switch to Clutch Switch
11		1	Wire, Purple, Key Switch to Coil
12		1	Wire, White, Clutch Switch to Safety Switch
13		1	Wire, Orange, Key Switch to Rectifier
14	351948	1	Cable, Red, Battery to Solenoid
15	352455	1	Cable, Black, Battery to Ground
16	112205	1	Cable, Black, Solenoid to Ground
17	346570	1	Cable, Red, Starter to Solenoid
18*	244348	1	Clip, Retainer, Wire Harness to Engine
19*	352495	1	Clip, Tinnerman, Retainer, Wire Harness to Safety Wire Mtg

\*Not Shown.

ALWAYS GIVE SERIAL NUMBER WHEN ORDERING PARTS



ILLUSTRATION P - WIRING, 14 H.P. TRACTOR



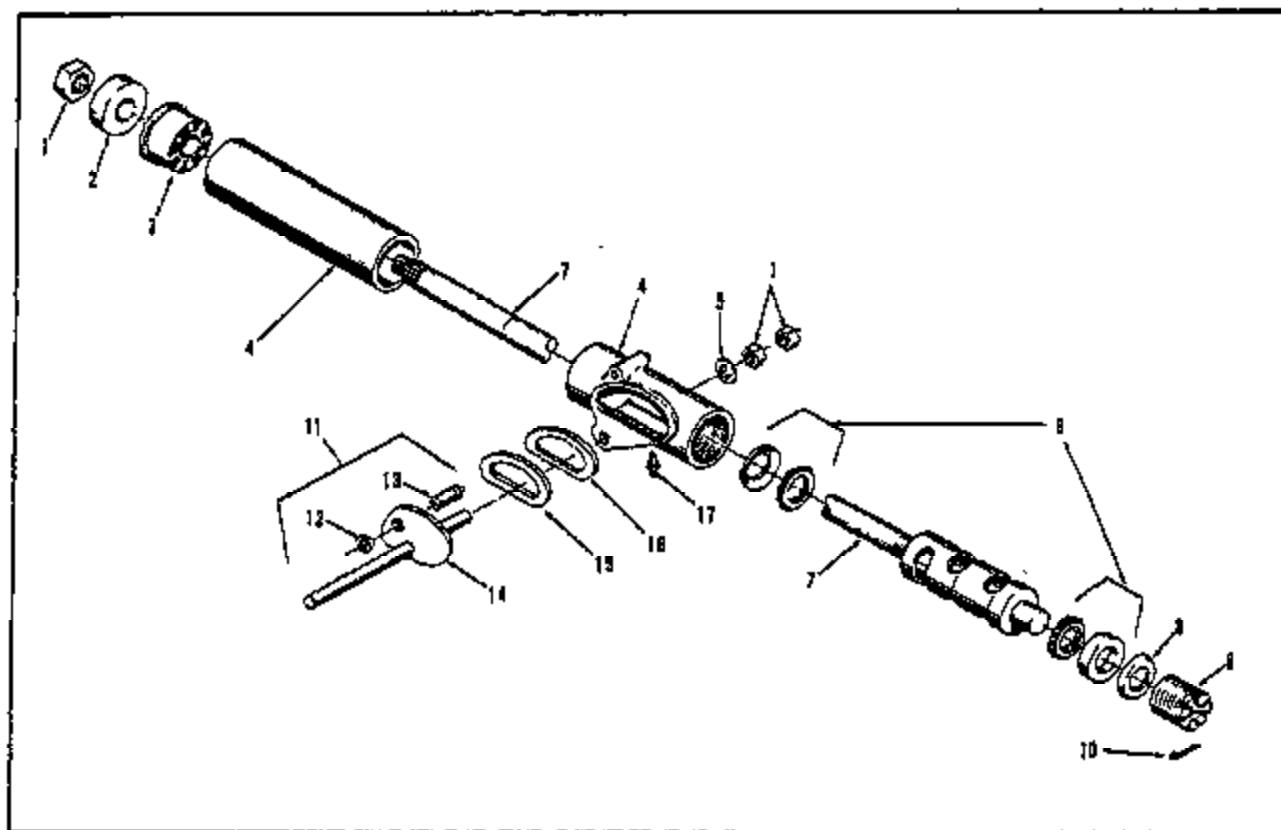
## PARTS LIST

Ref. No.	Part No.	Quan.	Description
	121513	1	Wire Harness (Incl Ref No. 1 through 14)
1		1	Wire, Orange, Key Switch to Rectifier
2		1	Wire, White, Clutch Switch to Safety Switch
3		1	Wire, Purple, Key Switch to Coil
4		1	Wire, White, Clutch Switch to Safety Switch
5		1	Wire, Yellow, Key Switch to Ammeter
6		1	Wire, Tan, Key Switch to Light Switch
7		1	Wire, Pink, Light Switch to Headlights
8		1	Wire, Black, Headlight to Ground
9		1	Wire, Yellow, Light Switch to Taillights
10		1	Wire, Brown, Clutch Switch to Key Switch
11		1	Wire, White, Safety Switch to Solenoid
12		1	Wire, Red, Solenoid to Ammeter
13		1	Wire, Tan, Clutch Switch to Clutch
14		1	Wire, Tan, Clutch Switch to Pilot Light
15	112208	1	Cable, Black, Solenoid to Ground
16	351948	1	Cable, Red, Battery to Solenoid
17	345570	1	Cable, Red, Starter to Solenoid
18	351955	1	Wire, Black, Ground Wire, Body to Frame
19	342456	1	Cable, Black, Battery to Ground
20*	344346	1	Clip, Retainer, Wire Harness to Engine
21*	352498	1	Clip, Tinsman, Retainer, Wire Harness to Safety Switch Wire Mounting

\*Not Shown.

ALWAYS GIVE SERIAL NUMBER WHEN ORDERING PARTS

ILLUSTRATION (10) - STEERING GEAR ASSEMBLY



PARTS LIST

Ref. No.	Part No.	Quan.	Description
	121486	1	Steering Gear Assembly (Incl the following)
1	443828	3	Nut, 5/8-18 Hex Jam
2	546083	1	Cover, Dust
3	546084	1	Bearing, Steering Column
4	500892	1	Bearing Gear Housing Assembly
5	546068	1	Washer
6	546068	1	Ball Bearing and Cup Assembly
7	N.S.S.*	1	Corn and Tube Assembly
8	546067	1	Washer, Belleville
9	546068	1	Plug, Steering Gear Adjustment
10	480024	1	Pin, 1/8 x 1/2 Cotter
11	500891	1	Steering Gear Assembly (Incl Ref. 1, 2, 12, 13, and 14)
12	443820	1	Nut, 1/2-20 Hex Jam
13	546069	1	Stud, Lever
14	500890	1	Lever Assembly
15	546070	1	Retainer, Oil Seal
16	546071	1	Oil Seal
17	471219	1	Fitting, Lubrication

\* N.S.S., Not serviced separately. For service use complete gear assembly, No. 121486

ALWAYS GIVE SERIAL NUMBER WHEN ORDERING PARTS

*A Careful Operator*  
**IS THE BEST INSURANCE  
AGAINST AN ACCIDENT.**

— NATIONAL SAFETY COUNCIL

See your tractor Owner's Manual for 'Guaranty' and 'How To Order Repair Parts'



**JACOBSEN MANUFACTURING COMPANY**  
*A Member Company of Allegheny Ludlum Industries*  
**RACINE, WISCONSIN 53403**

Made in U.S.A. 272